



Catfish Feed Deliveries

ISSN: 1944-9267

Released April 20, 2011, by the National Agricultural Statistics Service (NASS), Agricultural Statistics Board, United States Department of Agriculture (USDA).

March 2011 Catfish Feed Deliveries Up 29 Percent from Last Year

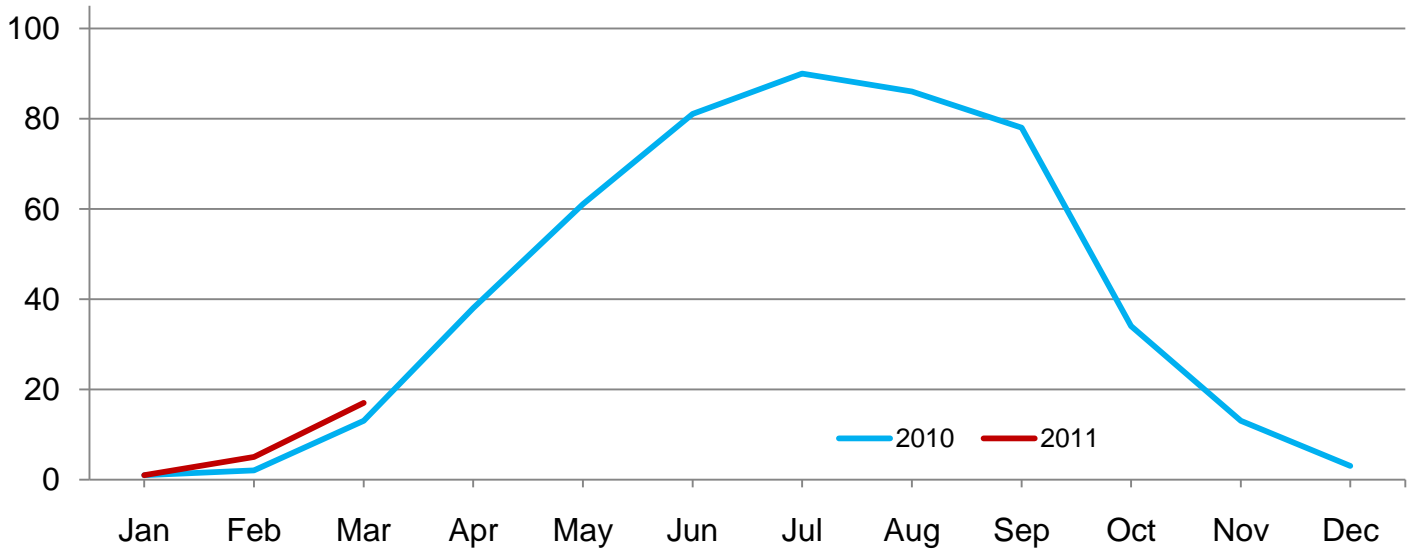
Total catfish feed delivered in the United States during March 2011 was 17,459 tons, up 29 percent from March 2010 and up 252 percent from the previous month. Foodsize catfish feed delivered totaled 16,891 tons, up 33 percent from the corresponding month a year ago. Feed delivered for fingerlings and broodfish totaled 568 tons, down 37 percent from the corresponding month a year ago.

March feed delivered to Alabama catfish growers for foodsize fish totaled 6,951 tons, up 100 percent from last year. Alabama accounted for 41 percent of the total foodsize catfish feed delivered to United States farmers.

The other major States with catfish feed deliveries for foodsize fish in March and their comparison to the previous year were Arkansas with 1,431 tons, up 2 percent; Louisiana with 298 tons, up 4 percent; and Mississippi with 5,446 tons, up 20 percent.

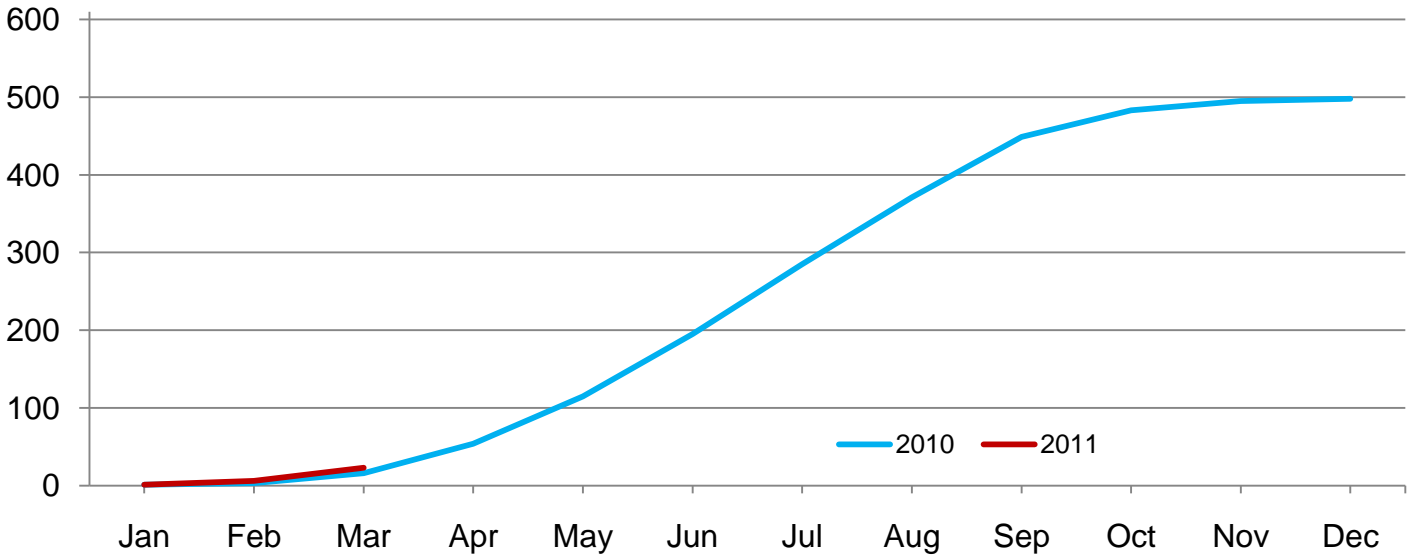
Foodsize Catfish Feed Delivered – United States

Thousand tons



Cumulative Foodsize Catfish Feed Delivered – United States

Thousand tons



Foodsize Catfish Feed Delivered – United States: 2010-2011

[Blank data cells indicate estimation period has not yet begun]

Month	By month		2011 as percent of 2010	Cumulative		2011 as percent of 2010
	2010	2011		2010	2011	
	(tons)	(tons)	(percent)	(tons)	(tons)	(percent)
January	1,433	1,045	73	1,433	1,045	73
February	1,528	4,631	303	2,961	5,676	192
March	12,680	16,891	133	15,641	22,567	144
April	38,080			53,721		
May	60,913			114,634		
June	80,769			195,403		
July	89,734			285,137		
August	86,024			371,161		
September	77,963			449,124		
October	33,567			482,691		
November	12,525			495,216		
December	3,270			498,486		

Fingerlings and Broodfish Catfish Feed Delivered – United States: 2010-2011

[Blank data cells indicate estimation period has not yet begun. To avoid disclosure of individual operations, State sums may not equal the total]

Month	By month		2011 as percent of 2010	Cumulative		2011 as percent of 2010
	2010	2011		2010	2011	
	(tons)	(tons)	(percent)	(tons)	(tons)	(percent)
January	59	76	129	59	76	129
February	142	328	231	201	404	201
March	900	568	63	1,101	972	88
April	2,065			3,166		
May	3,198			6,364		
June	4,917			11,281		
July	6,579			17,860		
August	7,004			24,864		
September	4,949			29,813		
October	2,198			32,011		
November	346			32,357		
December	54			32,411		

Foodsize Catfish Delivered – Alabama: 2010-2011

[Blank data cells indicate estimation period has not yet begun]

Month	By month		2011 as percent of 2010	Cumulative		2011 as percent of 2010
	2010	2011		2010	2011	
	(tons)	(tons)	(percent)	(tons)	(tons)	(percent)
January	392	212	54	392	212	54
February	599	1,647	275	991	1,859	188
March	3,472	6,951	200	4,463	8,810	197
April	12,416			16,879		
May	19,589			36,468		
June	27,165			63,633		
July	30,783			94,416		
August	30,537			124,953		
September	25,700			150,653		
October	10,298			160,951		
November	5,619			166,570		
December	1,524			168,094		

Foodsize Catfish Feed Delivered – Arkansas: 2010-2011

[Blank data cells indicate estimation period has not yet begun]

Month	By month		2011 as percent of 2010	Cumulative		2011 as percent of 2010
	2010	2011		2010	2011	
	(tons)	(tons)	(percent)	(tons)	(tons)	(percent)
January	76	52	68	76	52	68
February	75	462	616	151	514	340
March	1,406	1,431	102	1,557	1,945	125
April	4,087			5,644		
May	6,336			11,980		
June	7,102			19,082		
July	8,802			27,884		
August	8,559			36,443		
September	7,740			44,183		
October	3,132			47,315		
November	643			47,958		
December	107			48,065		

Fingerlings and Broodfish Catfish Feed Delivered – Arkansas: 2010-2011

[Blank data cells indicate estimation period has not yet begun]

Month	By month		2011 as percent of 2010	Cumulative		2011 as percent of 2010
	2010	2011		2010	2011	
	(tons)	(tons)	(percent)	(tons)	(tons)	(percent)
January	27	10	37	27	10	37
February	122	96	79	149	106	71
March	552	133	24	701	239	34
April	718			1,419		
May	789			2,208		
June	474			2,682		
July	902			3,584		
August	976			4,560		
September	1,086			5,646		
October	516			6,162		
November	82			6,244		
December	30			6,274		

Foodsize Catfish Feed Delivered – Louisiana: 2010-2011

[Blank data cells indicate estimation period has not yet begun]

Month	By month		2011 as percent of 2010	Cumulative		2011 as percent of 2010
	2010	2011		2010	2011	
	(tons)	(tons)	(percent)	(tons)	(tons)	(percent)
January	7	18	257	7	18	257
February	4	83	2,075	11	101	918
March	286	298	104	297	399	134
April	565			862		
May	678			1,540		
June	735			2,275		
July	679			2,954		
August	601			3,555		
September	500			4,055		
October	136			4,191		
November	67			4,258		
December	27			4,285		

Foodsize Catfish Feed Delivered – Mississippi: 2010-2011

[Blank data cells indicate estimation period has not yet begun]

Month	By month		2011 as percent of 2010	Cumulative		2011 as percent of 2010
	2010	2011		2010	2011	
	(tons)	(tons)	(percent)	(tons)	(tons)	(percent)
January	224	209	93	224	209	93
February	193	1,456	754	417	1,665	399
March	4,536	5,446	120	4,953	7,111	144
April	17,203			22,156		
May	29,285			51,441		
June	39,337			90,778		
July	43,676			134,454		
August	40,022			174,476		
September	37,849			212,325		
October	15,488			227,813		
November	3,900			231,713		
December	385			232,098		

Fingerlings and Broodfish Catfish Feed Delivered – Mississippi: 2010-2011

[Blank data cells indicate estimation period has not yet begun]

Month	By month		2011 as percent of 2010	Cumulative		2011 as percent of 2010
	2010	2011		2010	2011	
	(tons)	(tons)	(percent)	(tons)	(tons)	(percent)
January	8	47	588	8	47	588
February	2	204	10,200	10	251	2,510
March	280	365	130	290	616	212
April	1,134			1,424		
May	2,294			3,718		
June	4,287			8,005		
July	5,579			13,584		
August	5,900			19,484		
September	3,723			23,207		
October	1,593			24,800		
November	230			25,030		
December	1			25,031		

Foodsize Catfish Feed Delivered – Other States East of the Mississippi River: 2010-2011

[Blank data cells indicate estimation period has not yet begun]

Month	By month		2011 as percent of 2010	Cumulative		2011 as percent of 2010
	2010	2011		2010	2011	
	(tons)	(tons)	(percent)	(tons)	(tons)	(percent)
January	90	88	98	90	88	98
February	123	304	247	213	392	184
March	715	1,362	190	928	1,754	189
April	1,563			2,491		
May	1,540			4,031		
June	2,009			6,040		
July	1,647			7,687		
August	1,923			9,610		
September	2,266			11,876		
October	1,149			13,025		
November	604			13,629		
December	103			13,732		

Foodsize Catfish Feed Delivered – Other States West of the Mississippi River: 2010-2011

[Blank data cells indicate estimation period has not yet begun]

Month	By month		2011 as percent of 2010	Cumulative		2011 as percent of 2010
	2010	2011		2010	2011	
	(tons)	(tons)	(percent)	(tons)	(tons)	(percent)
January	644	466	72	644	466	72
February	534	679	127	1,178	1,145	97
March	2,265	1,403	62	3,443	2,548	74
April	2,246			5,689		
May	3,485			9,174		
June	4,421			13,595		
July	4,147			17,742		
August	4,382			22,124		
September	3,908			26,032		
October	3,364			29,396		
November	1,692			31,088		
December	1,124			32,212		

Fingerlings and Broodfish Catfish Feed Delivered – Other States West of the Mississippi River: 2010-2011

[Blank data cells indicate estimation period has not yet begun]

Month	By month		2011 as percent of 2010	Cumulative		2011 as percent of 2010
	2010	2011		2010	2011	
	(tons)	(tons)	(percent)	(tons)	(tons)	(percent)
January	2	-	(X)	2	-	(X)
February	2	-	(X)	4	-	(X)
March	42	18	43	46	18	39
April	102			148		
May	31			179		
June	69			248		
July	62			310		
August	48			358		
September	78			436		
October	46			482		
November	6			488		
December	1			489		

- Represents zero.

(X) Not applicable.

Statistical Methodology

Survey Procedures: All participating catfish feed mills are feed mills that produce and deliver catfish feed to bonafide catfish producers. Survey data for catfish feed are collected from feed mills by the USDA-NASS Mississippi Field Office, which is responsible for ensuring survey coverage is as complete as possible. Mills are contacted by mail, telephone, fax, or internet. Diligent effort is made to ensure that all operations are accounted for in the estimate.

Estimation Procedures: The "**Catfish Feed Deliveries**" report refers strictly to catfish feed *delivered* to bonafide catfish producers and excludes catfish feed delivered to producers of other species. The totals include both bagged and bulk feed. Prior to summarization, questionnaires are compared to previous reports for comparability. Estimates are made for feed mills whose reports are not available in time to be included in the release. Those mills are identified by an asterisk on page 10 of this release. Estimates are based on the mill's previous reports and current conditions. Published totals are a straight summation of the individual reports and estimated data.

If a mill uses a fiscal accounting system, proration is used to convert reported data to a calendar month basis.

Two unusual features of this report are worthy of note: (1) cooperating feed mills are listed by name, and (2) it is impossible for the public to infer the amount of catfish feed *produced* in each State. Since many mills *deliver* feed to more than one State and to growers of other species, any inferences about overall production per State or per mill are not valid.

Revision Policy: Revisions may be necessary in the following month's publication pending a review of late reports received from mills. Revisions to previous estimates are made to improve month-to-month relationships. Estimates for the previous month are subject to revision in all States and regions monthly totals. In February, all monthly estimates for the previous year are reviewed and subject to revisions. The review is primarily based on data that may have been received after the original estimates were published.

Reliability: Estimates are based on data from cooperating catfish feed mills, and therefore have no sampling variability. However, estimates may be subject to errors such as omissions, duplication, mistakes in reporting, recording, and processing of data. These errors are minimized through strict quality controls in the edit and summarization process and a careful review of all reported data for consistency and reasonableness.

Data were compiled in cooperation with the following feed mills:

Alabama Feed Mill LLC	*Land O Lakes
Arkat Feeds	Melick Aqua Feed LLC
Cargill Animal Nutrition	Rangen Inc.
Carolina Fish Feeds	Silver Cup
Delta Western	Southfresh Feeds
Fishbelt Feeds Inc.	Star Milling Co.
Flint River Mills Inc.	Topwater Feed Mill

*Estimated

Terms and Definitions Used for Catfish Feed Deliveries Estimates

Broodfish - Fish kept for egg production, including males. Broodfish produce the fertilized eggs that go to hatcheries. The most desirable size is 3 to 10 pounds or 4 to 6 years of age.

Catfish Feed - For the purposes of this report catfish feed is defined as feed *delivered* to bonafide catfish producers. Thus, it is not the absolute total amount of feed produced or even sold by a mill. (Some catfish feed is sold to producers of other species of fish.) The definition includes medicated feed. Catfish feed is designed to float on the surface of the water. Catfish are fed this way from the moment they hatch. Therefore, they learn to go to the surface for feed. The result is a clean nutritious diet for American farm raised catfish.

Catfish Feed for Foodsize Fish - Feed containing pellets larger than 1/8 of an inch.

Catfish Feed for Fingerlings/Broodfish - Feed containing pellets 1/8 of an inch or smaller.

Fingerlings – Fish weighing 2 to 60 pounds per 1,000 fish or 2 to 6 inches in length.

Foodsize Fish - Fish being grown commercially for human consumption. Optimum sizes at harvest depend on the market but are generally no lower than 3/4 pound but near one pound.

Information Contacts

Listed below are the commodity specialists in the Livestock Branch of the National Agricultural Statistics Service to contact for additional information. E-mail inquiries may be sent to nass@nass.usda.gov

Dan Kerestes, Chief, Livestock Branch	(202) 720-3570
Bruce Boess, Head, Poultry and Specialty Commodities Section	(202) 720-4447
Doug Bounds – Poultry Slaughter, Turkey Hatchery, Turkeys Raised	(202) 690-3237
Charles Butler – Catfish Feed Deliveries	(601) 965-4542
David Colwell – Cold Storage	(202) 720-8784
Kim Linonis – Layers, Eggs	(202) 690-8632
Troy Marshall – Broiler Hatchery, Chicken Hatchery, Honey	(202) 720-3244
Miste Salmon – Catfish Processing, Catfish Production, Trout Production, Census of Aquaculture, Egg Products, Mink	(202) 720-0585

Access to NASS Reports

For your convenience, you may access NASS reports and products the following ways:

- All reports are available electronically, at no cost, on the NASS web site: <http://www.nass.usda.gov>
- Both national and state specific reports are available via a free e-mail subscription. To set-up this free subscription, visit <http://www.nass.usda.gov> and in the “Receive NASS Updates” box under “Receive reports by Email,” click on “National” or “State” to select the reports you would like to receive.
- Printed reports may be purchased from the National Technical Information Service (NTIS) by calling toll-free (800) 999-6779, or (703) 605-6220 if calling from outside the United States or Canada. Accepted methods of payment are Visa, MasterCard, check, or money order.

For more information on NASS surveys and reports, call the NASS Agricultural Statistics Hotline at (800) 727-9540, 7:30 a.m. to 4:00 p.m. ET, or e-mail: nass@nass.usda.gov.

The United States Department of Agriculture (USDA) prohibits discrimination in all its programs and activities on the basis of race, color, national origin, age, disability, and where applicable, sex, marital status, familial status, parental status, religion, sexual orientation, political beliefs, genetic information, reprisal, or because all or a part of an individual's income is derived from any public assistance program. (Not all prohibited bases apply to all programs.) Persons with disabilities who require alternative means for communication of program information (Braille, large print, audiotape, etc.) should contact USDA's TARGET Center at (202) 720-2600 (voice and TDD).

To file a complaint of discrimination, write to USDA, Assistant Secretary for Civil Rights, Office of the Assistant Secretary for Civil Rights, 1400 Independence Avenue, S.W., Stop 9410, Washington, DC 20250-9410, or call toll-free at (866) 632-9992 (English) or (800) 877-8339 (TDD) or (866) 377-8642 (English Federal-relay) or (800) 845-6136 (Spanish Federal-relay). USDA is an equal opportunity provider and employer.